

# Your health. One community. Our priority.

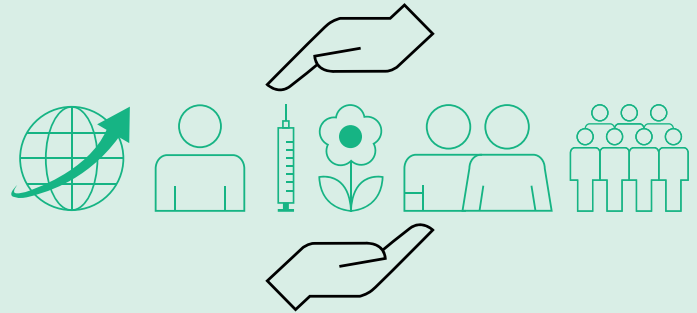
Sustainability at B. Braun Medical Ltd

## Greenhouse gas emissions reduction. What is B. Braun Medical Ltd undertaking to achieve a net zero future?

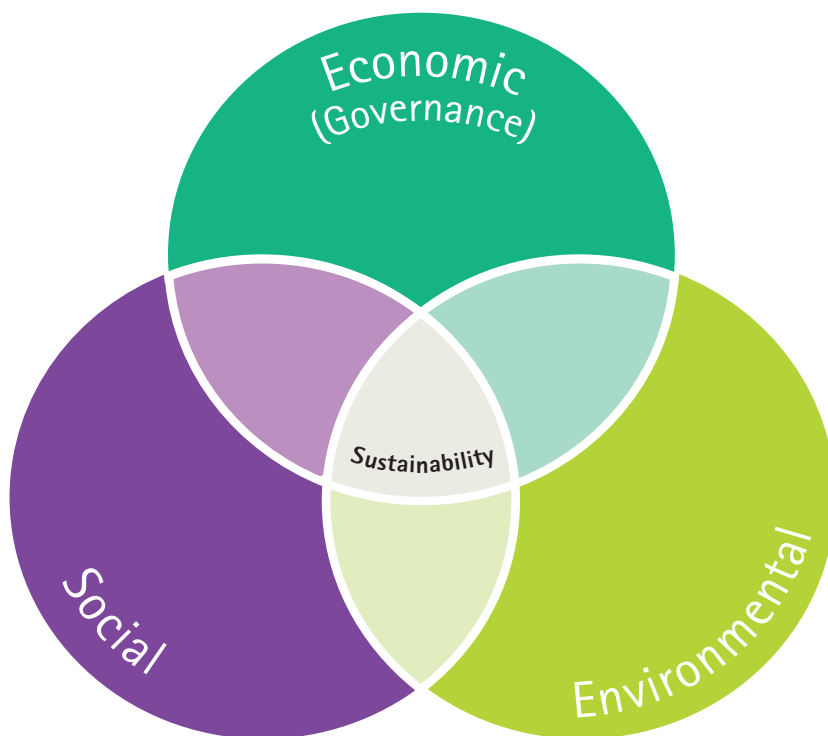
There is a pressing need to reduce global carbon emissions to prevent catastrophic and irreversible climate change.

B. Braun Medical Ltd is committed to playing its part in addressing the risks of climate change, including cutting the carbon emissions and aligning with the NHS Net Zero Road Map.

B. Braun Medical Ltd commits to cut the absolute greenhouse gas emissions from its Scope 1 emissions (use of gas and fuel) and Scope 2 emissions (electricity) by 50% gross by 2030, against a 2019 baseline. This commitment will be reviewed annually with the intended purpose of achieving Net Zero by 2045.



**We support the NHS's Net Zero strategy including those of all the devolved nations, plus those of our many other customers, NHS trusts, hospitals, distributors, clinics, dentists and vets, who are committed to reducing their emissions.**



### Our Value-Based Approach

As a good citizen, a responsible employer and community member, we sustainably utilise our resources economically, environmentally and socially to follow our vision of protecting and improving the health of people around the world.

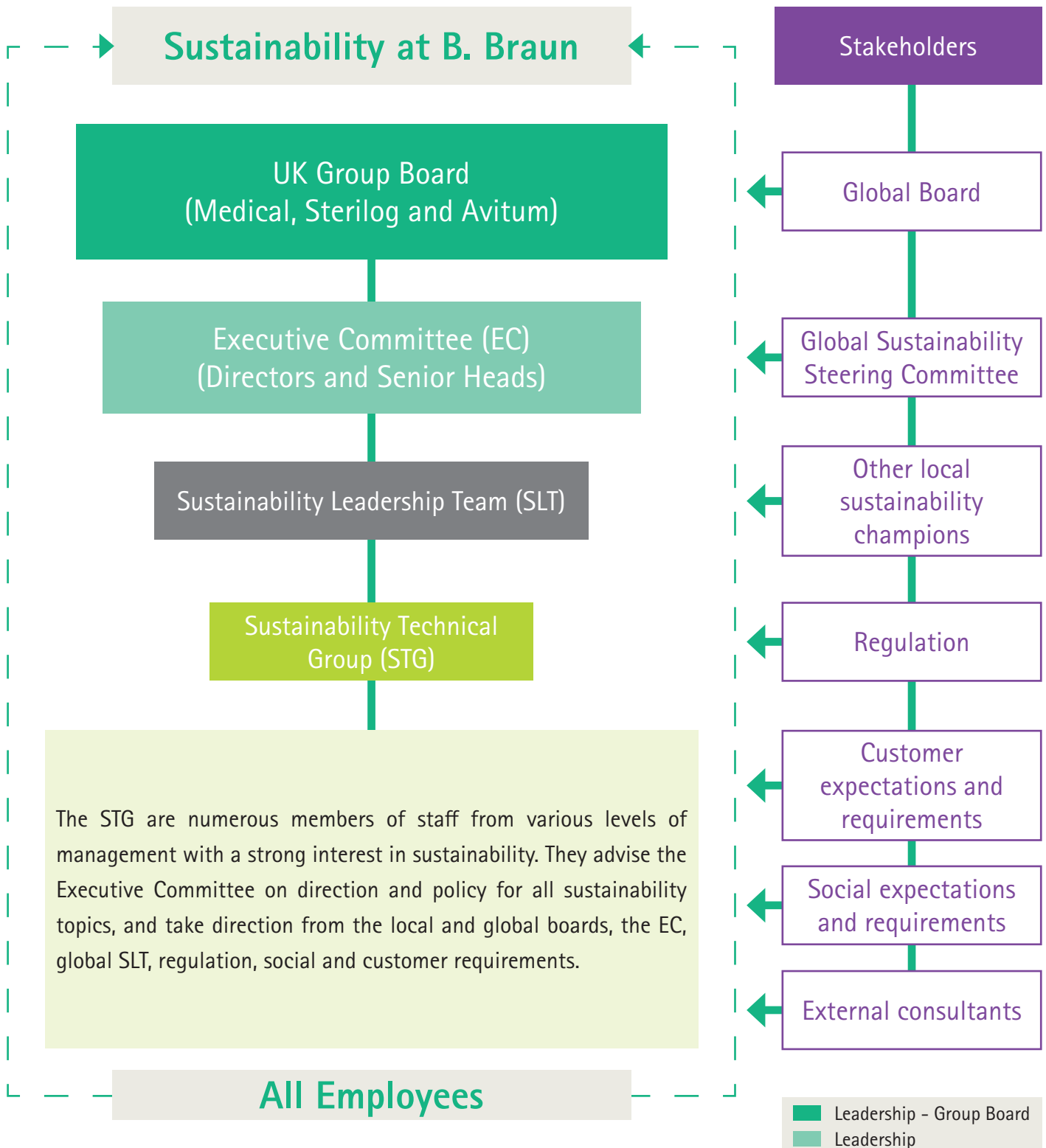
*We strive to fully integrate sustainability into all we do: in our solutions, our internal processes and our social commitments.*

### Our Focus Areas

- We use technologies as a solution to operate the company in a more sustainable way
- We act and innovate to ensure health and safety for our employees, patients and users
- We reduce our emissions and optimise consumption to save natural resources
- We commit to social responsibility and facilitate access to health care

# Your health. One community. Our priority.

B. Braun UK Sustainability Leadership Team and positive actions groups



# Your health. One community. Our priority.

## B. Braun Medical Ltd carbon reduction roadmap



### Done

- Calculated our Scope 1 and 2 (Operational) tCO<sub>2</sub>e emissions; totals 2221 (2019), 1631 (2020), 1550 (2021), 1527 (2022), 1362 (2023), 1471 (2024)
- Published emissions figures publicly via the Directors Report on Companies House
- Published an Energy Policy for B. Braun Medical Ltd in 2021: [www.bbraun.co.uk/en/company/policies](http://www.bbraun.co.uk/en/company/policies). Reviewed 2022, 2023 and 2024
- Committed to reduce our Scope 1 and 2 emissions by 50% by the end of 2030
- Switched electricity tariff to a renewable one where we buy electricity for all B. Braun UK companies
- Set up local and global Sustainability Steering Committees to advise the boards (now called the Sustainability Leadership Team)
- Created local and global Sustainability three year roadmaps
- Created local project groups (PAGs) to prioritise regulatory/customer requirements/questions
- Set an intensity ratio with 2019 as the baseline
- Joined the Sustainable Healthcare Coalition
- Met with the leaders of the Supply Chain Coordination Ltd
- Joined the ABHI Sustainability Group
- Published our first integrated Annual Global Sustainability and Financial Report for 2022. Here we are making B. Braun's sustainability transparent. Our third Annual Report for 2024 can be found here: <https://www.bbraun.com/en/about-us/company/facts-and-figures/annual-report.html>
- Amended our car policy. We removed the petrol and diesel choices, allowing hybrid, plug-ins and 100% EVs only
- Allowed company car users to switch earlier than their 4-year term
- Improved our Building Management Systems (BMSs) with better controls and programming
- Switched all remaining internal lighting in the head office building to LEDs
- Switched remainder of lighting at the Technical Services site to LEDs (Offices and workshops)
- Calculated our UK Scope 3 emissions in 5 Category areas (Up and Downstream Distribution and Storage, Waste Generated in Operations, Business Travel, Employee Commuting). Published our first CRP to PPN 06/21 at [www.bbraun.co.uk](http://www.bbraun.co.uk)
- Reported Business Travel – Scope 3 Category 6, for the first time, which includes employee own car business miles, train, plane, ferry and overnight hotel stays
- Installed further EV chargers on HQ site – to encourage employees to switch to BEV/PHEV cars
- Upgraded the Distribution Centre's main electrical distribution board (allowing further electrical work – solar, EV chargers – to take place afterwards)



### 2025

- Continue to purchase 100% renewable (green) electricity
- Annually review and, where required, update our Energy Policy
- Continue to only allow company cars to be battery EVs and plug-in's only
- Install solar panels on our Distribution Centre's roof – cutting our electricity purchase by approximately 20% of our total kwh



### Onwards

- Consider ways to reduce our UK Scope 3 emissions in 5 Category areas (Up and Downstream Distribution and Storage, Waste Generated in Operations, Business Travel, Employee Commuting)
- Continue to reduce energy use and reduce associated emissions through further projects (PAGs)

### Why?

With sustainability as one of our core values, we take business decisions with future generations in mind.

### How?

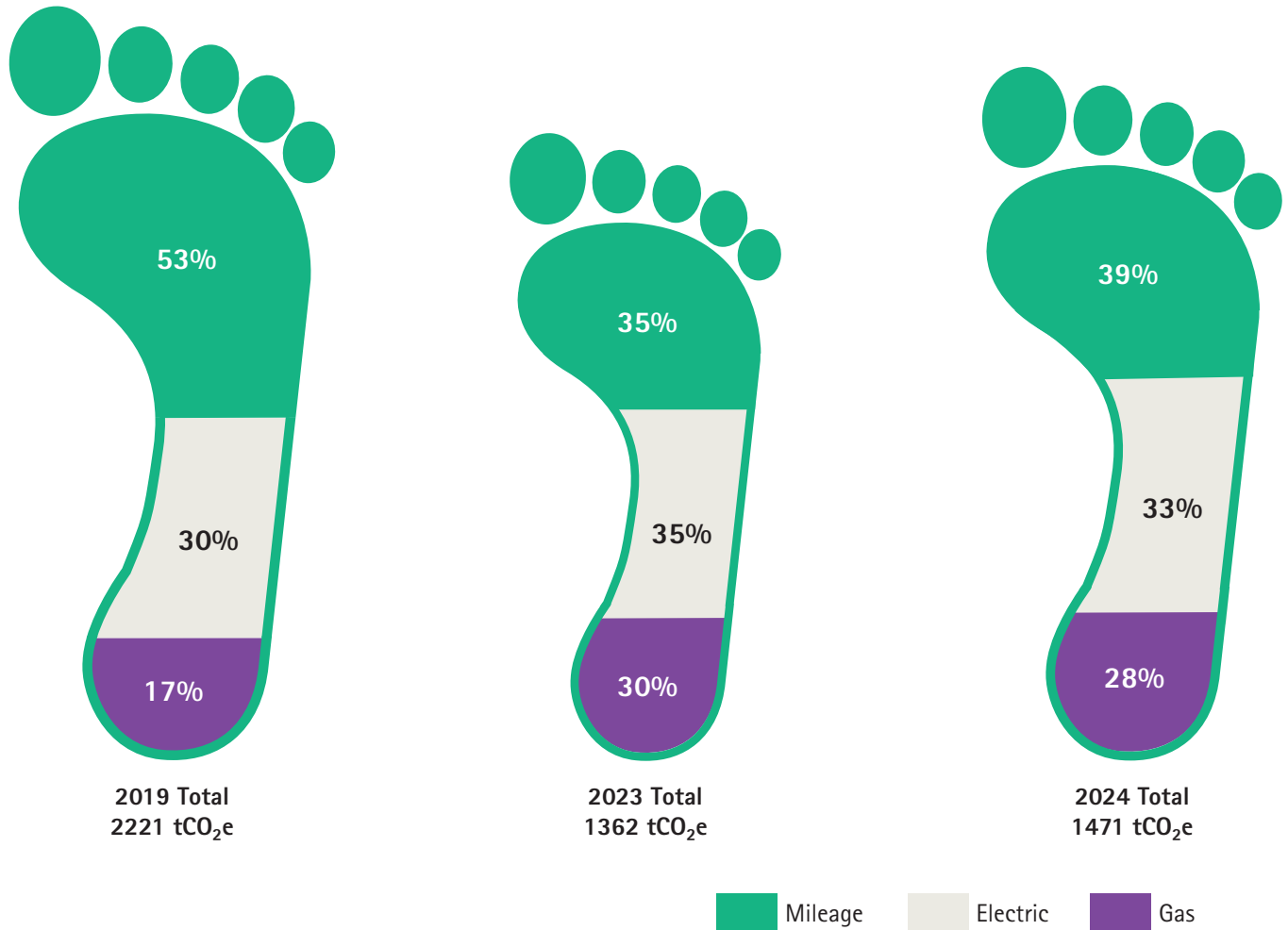
We commit ourselves to our common standards and global targets and bring them to life with local contributions.

### What?

We develop sustainable solutions, implement sustainability management and professionalise our reporting.

# Your health. One community. Our priority.

B. Braun Medical Ltd carbon figures – Scope 1 and 2 tCO<sub>2</sub>e organisational footprint 2024, 2023 and 2019 (Base year)



## Scope 1 and 2 Carbon figures for BBMUK (tonnes CO<sub>2</sub> equivalent)

