



Recommendation for inguinal hernias: Optilene® Mesh LP



Drawn to a
larger scale

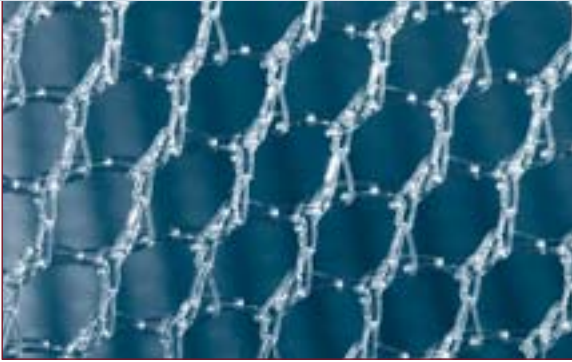
The new Optilene® Mesh LP (Lightweight Polypropylene Mesh) provides a lot of benefits to the patient.

Biocompatibility / Features:

- Super-light mesh – less foreign material.
- Thinner and more conformable than traditional meshes. Due to its excellent flexibility it adapts to the movements of the patient resulting from body motion. This results in highest patient comfort.
- It is flexible, strong and secure.



Recommendation for incisional hernias: Optilene® Mesh Elastic



Drawn to a
larger scale

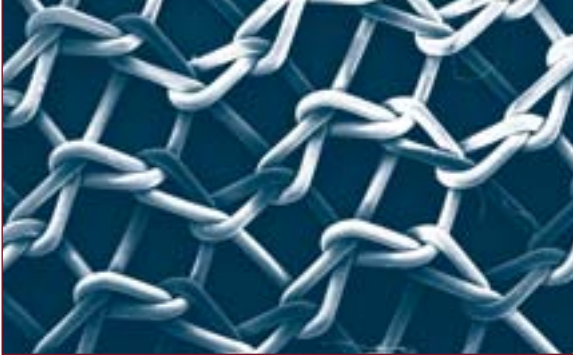
The new Optilene® Mesh Elastic provides a lot of benefits to the patient.

Biocompatibility / Features:

- Due to the multidirectional elasticity Optilene® Mesh Elastic is able to adapt to all movements taking place in the abdominal wall.
- The natural abdominal wall physiology is maintained.
- It is a strong and secure lightweight mesh.



Recommendation for inguinal hernias: Premilene® Mesh



Drawn to a
larger scale

Premilene® Mesh provides a lot of benefits to the patient.

Biocompatibility / Features:

- Thin mesh – maximum patient comfort.
- The smooth Premilene® Mesh adapts to the movements of the patient resulting from body motion.
- Soft, conformable and strong.



Recommendation for inguinal hernias: Premilene® Mesh Self-Forming Plug

Premilene® Mesh Self-Forming Plug provides a lot of benefits to the patient and also to the surgeon.

Biocompatibility / Features:

- Perfect conformity to the shape of the defect.
- Complete filling of the defect.
- Smooth plug design for a faster healing.
- Improved patient comfort.
- Excellent healing response.

