

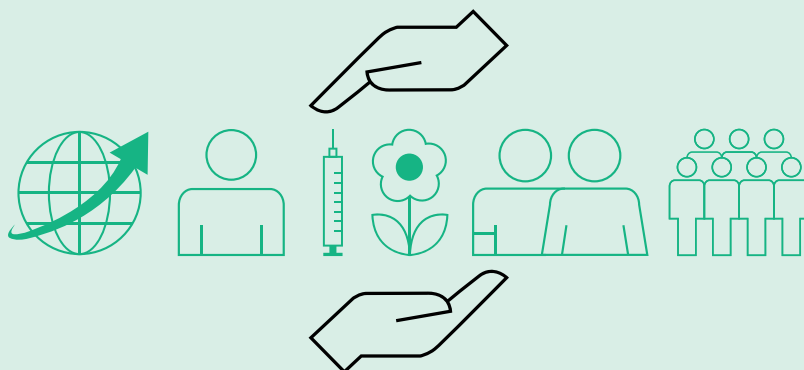
Fighting Climate Change at B. Braun Medical Ltd

Energy and Carbon Reduction target for 2030

What is B. Braun Medical Ltd doing to reduce its greenhouse gas emissions?

There is a pressing need to reduce global carbon emissions to prevent catastrophic and irreversible climate change. B. Braun Medical Ltd is committed to playing its part in addressing the risks of climate change and reducing its absolute greenhouse gas emissions. Specifically, by 2030, we commit to a reduction in Scope 1 and 2 admissions of 50% compared to 2019 .

This commitment will be reviewed annually with the intended purpose of achieving Net Zero by 2045. We support NHS England's Net Zero Strategy, and those of NHS Scotland and NHS Wales, plus those of our many other customers including: hospitals, distributors, clinics, dentists, and vets, who are committed to reducing their emissions.



Introduction to B. Braun - Context of the Organisation

B. Braun Medical Ltd operates a number of facilities within the United Kingdom.

1. Unit 8, Brookdale Road, Sheffield (head office, drug compounding, aseptic processing, warehousing and distribution)
2. Unit 2, Brookdale Road, Sheffield (warehousing and distribution)
3. Chambers Way, Sheffield (medical device manufacturing, repairs and servicing operations)
4. Tunstall Road, Sunderland (customer services)

The majority of products, aside from those used within drug compounding, are sourced from within the B. Braun Global supply chain in Germany. Activities and services supplied by B. Braun Medical Ltd such as Homecare, TransCare and Emerald, which are managed in Sheffield, are captured within our emissions calculations.

Scope of our Emissions Calculations

B. Braun Medical Ltd has calculated Scope 1 and 2 GhG emissions, using 2019 as a baseline for reduction. Scope 3 calculations are ongoing and a subset (those listed in the Policy Procurement Note PPN 06/21) of 5 categories has been calculated.

In particular:

- Scope 1 includes all petrol, diesel and gas purchases as well as company car mileage
- Scope 2 includes all electricity purchases for buildings and company cars

Scope 3 includes:

1. Upstream transportation and storage (from tier 1 suppliers)
2. Downstream transportation and storage (to customers)
3. Waste (generated at sites)
4. Business travel (taxis, car rentals, trains, ships and planes)
5. Employer commuter travel (employee travel to and from sites and cars owned by our employees)

Methodology of Operational 'Carbon Footprint' Emissions Calculation

All methods of data collection and analysis are based upon The GhG Protocol (revised) and other relevant guidance including The GhG Protocol Scope Guidance. Direct monitoring is unavailable, therefore accurate emission data was calculated from fuel use and mileage data.

Scope 1 GhG emissions were calculated based on the purchased quantities of commercial fuels (such as natural gas) and mileage.

Scope 2 GhG emissions were primarily calculated from metered electricity consumption. In all calculations, published UK Government emission factors or contractors' emission factors were used.

Furthermore, the equivalent emission factors (in tCO₂e carbon dioxide equivalent) were calculated to provide reporting of emissions for the six greenhouse gases covered by the Kyoto Protocol.

Specific Sector Tools

B. Braun is a diverse medical and healthcare company (SIC 86900 Other Human Activities), as such we are unable to choose any specific sector tools. All methodology was collected centrally and based on absolute emissions.

Table One: The energy usage and equivalent carbon dioxide amounts (table) showing mandatory Scope 1 and 2 emissions and performance/intensity ratios.

UK/Off-Shore Energy and Emissions	Current Year Reporting 2022	Year 2021	Year 2020	Base Year 2019	Unit	Emissions Reduction (%) From Base Year
Energy from gas combustion (Scope 1)	1778124	2055427	2233899	2065965	kWh Gross	-
Emissions from gas combustion (Scope 1)	325	376	411	380	tCO ₂ e	15%
Energy from transport (Scope 1)	2857462	2487017	2232623	4503947	kWh	-
Emissions from transport (Scope 1)	709	617	564	1173	tCO ₂ e	40%
Total Scope 1 energy from activities for which the company own or control including combustion of fuel and operation of facilities	4635586	4542444	4466522	6569912	kWh	-
Total Scope 1 emissions from activities for which the company own or control including combustion of fuel and operation of facilities	1033	994	975	1553	tCO ₂ e	33 %
Total Scope 2 energy from purchase of electricity, heat, steam and cooling purchased for own use	2552900	2619453	2812853	2600888	kWh Gross	-
Total Scope 2 emissions from purchase of electricity, heat, steam and cooling purchased for own use	494	556	656	668	tCO ₂ e	26 %
Total Scope 1 and 2 energy consumption used to calculate above emissions	7188486	7161897	7279375	9170800	kWh	-
Total Scope 1 and 2 emissions from energy consumption used to calculate above emissions	1527	1550	1631	2221	tCO ₂ e	31%
Turnover/Revenue	200	175	176	164	£million	-
Total number of staff based at the sites (full time equivalents)	731	724	601	566	people	-
Intensity ratio one: tCO ₂ e (total gross Scope 1 + 2 carbon dioxide emissions) over total sales figures (turnover) millions	7.62	8.95	9.42	14.06	-	-
Intensity ratio two: vehicle carbon dioxide emissions tCO ₂ e (Scope 1) – over sales figures (turnover) millions	3.53	3.64	3.34	7.68	-	-

Table Two: 2021 Intensity Ratios

	2021 Intensity Ratios	2022	2021	2020	2019 (Base)
Intensity ratio one:	Total Scope 1 and 2 carbon dioxide emissions from energy consumption - tCO ₂ e over turnover millions	7.62	8.95	9.42	14.06
Intensity ratio two:	Vehicle carbon dioxide emissions tCO ₂ e (Scope 1) – over sales figures (turnover) millions	3.53	3.64	3.34	7.68

Brief Comments on the Above Figures

It is clear that in 2019 (our base year) our emissions from Scope 1 Transport (1173.19 tCO₂e) constituted over 50% of our total Scope 1 and 2 emissions of equivalent carbon dioxide. In 2022 this reduced to 46% (708.60 tCO₂e) of the Scope 1 and 2 total. In 2022 we changed our Company Car Policy, and we are starting to see the positive effects on these figures. It is also clear that gas usage is also a large source of our tCO₂e. Reducing this usage by installing newer, more efficient plant would lower the total Scope 1 emissions figures. Our objectives set last year have reduced our Natural Gas tCO₂e, from 378.96 in 2019 to 324.39 in 2022. Further work on lowering, preferably removing a large part of this usage is required over forthcoming years to aid our overall reduction target. Similarly purchased electricity amounted to 658.52 tCO₂e in 2019 and 455.73 tCO₂e in 2022. The work around LED lighting, Building Management Systems and setting back Air Handling Units over weekends and nights, has contributed to this as well as hybrid working for office-based staff.

Looking Forward

B. Braun Medical Ltd has committed to reducing its Scope 1 and 2 emissions by 50% by the end of 2030, supporting NHS England on its path to achieving Net Zero by 2045.

Our Roadmap for Carbon Reduction Activities

In support of our commitment to reductions in Scope 1 and 2 emissions, B. Braun Medical Ltd will also commit to the following:

- Continue to purchase 100% renewable electricity
- Reviewed and where required, update our Energy Policy
- Continue to only allow company cars choice to be battery EVs, Plug-in or hybrids
- Allow petrol/diesel company car users to switch earlier than their 4-year term
- Explore the options of installing further renewable energy solutions
- Continue to upgrade and improve our Building Management Systems (BMS)
- Scope-out work for the Distribution Centre (warehouse) plant room upgrade, reducing/removing use of gas

Our Completed Carbon Reduction Activities in 2022

- Continued to purchase 100% renewable (green) electricity
- Reviewed and where required, update our Energy Policy (March 2022 and 2023)
- Amended our Car Policy and introduce 100% EVs during 2022
- Separated emergency and task-based fluorescent lighting in the office building at the head office site, and installed LED emergency lighting
- Switched all remainder internal lighting in the head office building to LEDs
- Switched remainder of lighting at the Technical Services site to LEDs (Offices and Workshops)
- Switched lighting in high-bay warehouse (Distribution Centre) to LEDs

Review – Monitoring and Measurement

B. Braun Medical Ltd will review its energy policy, commitments, targets, plans and projects annually through the local SSC, and where our policy, targets and plans need to change, these will be done so via board approval/knowledge.

Responsible Persons for Targets

Mr Michael Parden – UK Group Managing Director.

Mr Paul Skelton – Managing Director, Finance, IT and Operations

The (local) Sustainability Steering Committee (SSC)