

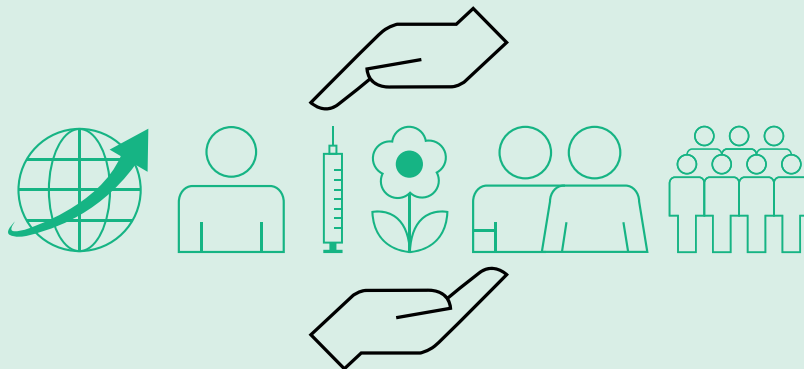
Fighting Climate Change at B. Braun Medical Ltd

Energy and Carbon Reduction target for 2030

What is B. Braun Medical Ltd doing to reduce its greenhouse gas emissions?

There is a pressing need to reduce global carbon emissions to prevent catastrophic and irreversible climate change. B. Braun Medical Ltd is committed to playing its part in addressing the risks of climate change and reducing its absolute greenhouse gas emissions. Specifically, by 2030, we commit to a reduction in Scope 1 and 2 emissions to 50% compared to 2019 .

This commitment will be reviewed annually with the intended purpose of achieving Net Zero by 2045. We support NHS England's Net Zero Strategy, and those of NHS Scotland and NHS Wales, plus those of our many other customers including: hospitals, distributors, clinics, dentists, and vets, who are committed to reducing their emissions.



Introduction to B. Braun - Context of the Organisation

B. Braun Medical Ltd operates a number of facilities within the United Kingdom.

1. Unit 8, Brookdale Road, Sheffield (head office, drug compounding, aseptic processing, warehousing and distribution)
2. Unit 2, Brookdale Road, Sheffield (warehousing and distribution)
3. Chambers Way, Sheffield (medical device manufacturing, repairs and servicing operations)
4. Tunstall Road, Sunderland (customer services)

The majority of products, aside from those used within drug compounding, are sourced from within the B. Braun Global supply chain in Germany. Activities and services supplied by B. Braun Medical Ltd such as Homecare, TransCare and Emerald, which are managed in Sheffield, are captured within our emissions calculations.

Scope of our Emissions Calculations

B. Braun Medical Ltd has calculated Scope 1 and 2 GhG emissions, using 2019 as a baseline for reduction. Scope 3 calculations are ongoing and a subset (those listed in the Policy Procurement Note PPN 06/21) of 5 categories have been calculated.

In particular:

- Scope 1 includes all petrol, diesel and gas purchases as well as company car mileage
- Scope 2 includes all electricity purchases for buildings and company cars (EV)

Scope 3 includes:

1. Upstream transportation and storage (from tier 1 suppliers)
2. Downstream transportation and storage (to customers)
3. Waste (generated at sites)
4. Business travel (taxis, car rentals, trains, ships and planes)
5. Employer commuter travel (employee travel to and from sites and cars owned by our employees)

Methodology of Operational 'Carbon Footprint' Emissions Calculation

All methods of data collection and analysis are based upon The GhG Protocol (revised) and other relevant guidance including The GhG Protocol Scope Guidance. Direct monitoring is unavailable, therefore accurate emission data was calculated from fuel use and mileage data.

Scope 1 GhG emissions were calculated based on the purchased quantities of commercial fuels (such as natural gas) and mileage.

Scope 2 GhG emissions were primarily calculated from metered electricity consumption. In all calculations, published UK Government emission factors or contractors' emission factors were used.

Furthermore, the equivalent emission factors (in tCO₂e carbon dioxide equivalent) were calculated to provide reporting of emissions for the six greenhouse gases covered by the Kyoto Protocol.

Specific Sector Tools

B. Braun is a diverse medical and healthcare company (SIC 86900 Other Human Activities), as such we are unable to choose any specific sector tools. All methodology was collected centrally and based on absolute emissions.

Table One: The energy usage and equivalent carbon dioxide amounts (table) showing mandatory Scope 1 and 2 emissions and performance/intensity ratios.

UK and offshore energy & emissions	Year 2023	Year 2022	Base year (2019)	Unit	Emissions Reduction (%) from Base Year
Energy from Gas Combustion (Scope 1)	2233454.15	1778124.18	2065965.06	kWh Gross	
Emissions from Gas Combustion for the figure above (Scope 1)	408.56	324.61	379.97	tCO2e	7.52%
Energy from Transport (Scope 1)	1262003.10	2857461.75	4503946.60	kWh	
Emissions from Transport (Scope 1)	303.39	708.60	1173.19	tCO2e	74.14%
Total Scope 1 Energy from activities for which the company own or control including combustion of fuel & operation of facilities	3495457.25	4635585.93	6569911.67	kWh	
Total Scope 1 Emissions from activities for which the company own or control including combustion of fuel & operation of facilities	711.95	1033.22	1553.16	tCO2e	54.16%
Energy from purchase of electricity, heat, steam and cooling purchased for own use – (Scope 2)	2278520.9*	2356649.10	2600888.14	kWh Gross	
Emissions from purchase of electricity, heat, steam and cooling purchased for own use – (Scope 2)	471.82	455.73	658.52	tCO2e	28.35%
Energy from Transport (PHEV & EV) (Scope 2)	860137.92	196251.25	24518.05	kWh Gross	
Emissions from Transport (PHEV & EV) (Scope 2)	178.01	37.92	9.38	tCO2e	1797.76%
Total Scope 2 Energy from purchase of electricity, heat, steam and cooling purchased for own use, and Transport	3138658.82	2552900.35	2600888.14	kWh Gross	
Total Scope 2 Emissions from purchase of electricity, heat, steam and cooling purchased for own use, and Transport	649.83	493.65	667.90	tCO2e	2.71%
Total Scope 1 & 2 Energy consumption used to calculate above emissions ONLY	6634116.07	7188486.28	9170799.80	kWh	
Total Scope 1 & 2 Emissions from Energy consumption used to calculate above emissions ONLY	1361.78	1526.87	2221.07	tCO2e	38.69%
Emissions from employee business travel in vehicles for which the company does not own or control (Scope 3)**	390.79	260.38	481.14	tCO2e	
Turnover/Revenue	228.43	200.48	164.29	£million	
Total number of staff based at the sites (Full Time Equivalents)	779	731	566	people	

*On-site EV chargers, kWh has been deducted from this figure (which was 37286.8 kWh)

**employee own car business miles, train, plane, ferry and overnight hotel stay.

Green = Reduction / Red = Increase

Table Two: Intensity Ratios

	Intensity Ratios	2023	2022	2019 (Base)
Intensity Ratio 1:	tCO2e (Total gross Scope 1 + 2 Carbon Dioxide emissions) over	5.96	7.62	13.52
Intensity Ratio 2:	Vehicle Carbon Dioxide Emissions tCO2e (Scope 1) – over sales figures (turnover) millions	1.33	3.53	7.14

Brief Comments on the Above Figures

Our Scope 1 & 2 tCO₂e totals continue to decrease year on year, which is expected, due to appreciating over half of this total was due to business miles in fossil fuelled vehicles, resulting in policy change, moving the Company Car policy to BEVs and Plug-in Hybrids. Consequentially we are seeing a shift from Scope 1 (down) into Scope 2 (up). It is also noticeable that we used more gas in 2023. There was significantly more usage in the first 3 months of 2023 than the previous 2 years. This cannot be explained when average temperatures for these months were similar to previous years.

We travelled 4.27 million business miles in 2019 (1182.57 tCO₂e – all in Scope 1 & 2) which equates to 277 grams CO₂e per mile. In 2022 we travelled 3.19 million business miles (746.52 tCO₂e – Scope 1 & 2) which equates to 234 grams CO₂e per mile, which shows, the introduction of EVs to our fleet is reducing our tCO₂e per mile. In 2023 our mileage increased (up) to pre-covid (2019) distances. We travelled 3.47 million business miles (481 tCO₂e – Scope 1 & 2) which equates to 138 grams CO₂e per mile, which shows the introduction of EVs to our fleet has reduced our associated tCO₂e per mile.

Looking Forward

B. Braun Medical Ltd has committed to reducing its Scope 1 and 2 emissions by 50% by the end of 2030, supporting NHS England on its path to achieving Net Zero by 2045.

Our Roadmap for Carbon Reduction Activities

In support of our commitment to reductions in Scope 1 and 2 emissions, B. Braun Medical Ltd will also commit to the following:

- Continue to purchase 100% renewable electricity
- Reviewed and where required, update our Energy Policy
- Continue to only allow company cars choice to be battery EVs, Plug-in's
- Allow petrol/diesel company car users to switch earlier than their 4-year term
- Explore the options of installing further renewable energy solutions
- Continue to upgrade and improve our Building Management Systems (BMS)
- Scope-out work for the Distribution Centre (warehouse) plant room upgrade, reducing/removing use of gas

Our Completed Carbon Reduction Activities in 2023

- We installed additional submeters in buildings at the head office site to better monitor and understand usage.
- Our Company Car Policy continues to only offer Plug-in Hybrids and battery EVs.
- We continued to allow our company car drivers to switch to the above before the end of their 4-year term, from a fossil fuelled vehicle.
- We continued to find and replace any non-LED lighting, with LED, within our buildings.
- We are continuing to up-grade our BMS controllers and associated software.
- We installed further EV chargers on HQ site – to encourage employees to switch to BEV/PHEV cars.

Review – Monitoring and Measurement

B. Braun Medical Ltd will review its energy policy, commitments, targets, plans and projects annually through the local SLT, and where our policy, targets and plans need to change, these will be done so via board approval/knowledge.

Responsible Persons for Targets

Mr Michael Parden – Managing Director.

Mr Paul Skelton – Managing Director, Finance, IT and Operations

The Local Sustainability Leadership Team (SLT)