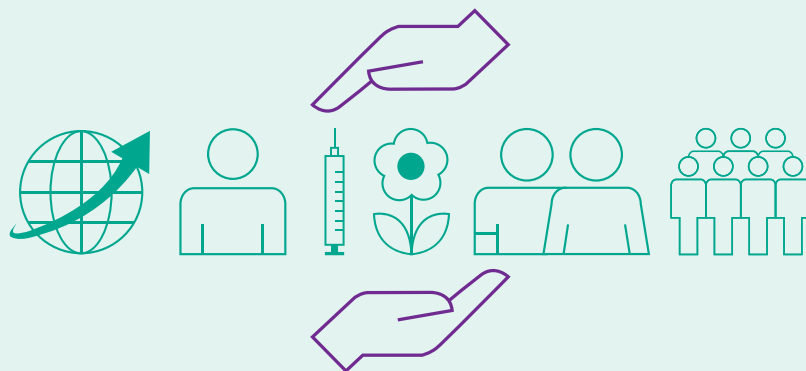


# FIGHTING CLIMATE CHANGE AT B. BRAUN MEDICAL LTD

Energy and Carbon Reduction target for 2035

Version one



## What is B. Braun Medical Ltd doing to reduce its greenhouse gas emissions?

There is a pressing need to reduce global carbon emissions to prevent catastrophic and irreversible climate change. B. Braun Medical Ltd is committed to playing its part in addressing the risks of climate change and reducing its absolute Greenhouse Gas (GhG) emissions. Specifically, by 2035, we commit to a reduction in Scope 1 and 2 admissions of 40% compared to 2019 numbers.

This commitment will be reviewed annually with the intended purpose of achieving Net Zero by 2045. We support NHS England's Net Zero Strategy, and those of NHS Scotland and NHS Wales, plus those of our many other customers including; hospitals, distributors, clinics, dentists, and vets, who are committed to reducing their emissions.

### Introduction to B. Braun - Context of the Organisation

B. Braun Medical Ltd operates a number of facilities within the United Kingdom.

1. Unit 8, Brookdale Road, Sheffield (head office, drug compounding, aseptic processing, warehousing and distribution))
2. Unit 2, Brookdale Road, Sheffield (warehousing and distribution)
3. Chambers Way, Sheffield (medical device manufacturing, repairs and servicing operations)
4. Tunstall Road, Sunderland (customer services)

The majority of products, aside from those used within drug compounding, are sourced from within the B. Braun Global supply chain in Germany. Activities and services supplied by B. Braun Medical Ltd such as Homecare, TransCare and Emerald which are managed in Sheffield are captured within our emissions calculations.

## Scope of our Emissions Calculations

B. Braun Medical Ltd has calculated Scope 1 and 2 GhG emissions, using 2019 as a baseline for reduction. Scope 3 calculations are ongoing and a subset (those listed in the Cabinet Office Procurement note 06/21) will be collected and analysed within 1 - 3 years.

In particular;

- Scope 1 includes all petrol, diesel and gas purchases as well as company car mileage
- Scope 2 includes all electricity purchases for buildings and cars

### Scope 3 includes

1. Upstream transportation and storage (from tier 1 suppliers)
2. Downstream transportation and storage (to customers)
3. Waste (generated at sites)
4. Business travel (taxis, car rentals, trains, ships and planes)
5. Commuter travel (employee travel to and from sites)

## Methodology of Operational 'Carbon Footprint' Emissions Calculation

All methods of data collection and analysis are based upon The GhG Protocol (revised) and other relevant guidance including The GhG Protocol Scope Guidance. Direct monitoring is unavailable therefore accurate emission data was calculated from fuel use and mileage data.

Scope 1 GhG emissions were calculated based on the purchased quantities of commercial fuels (such as natural gas) and mileage.

Scope 2 GhG emissions were primarily calculated from metered electricity consumption. In all calculations, published UK Government emission factors or contractor's emission factors were used.

Furthermore, the equivalent emission factors (in CO<sub>2</sub>e carbon dioxide equivalent) were calculated to provide reporting of emissions for the six greenhouse gases covered by the Kyoto Protocol.

## Specific Sector Tools

B. Braun is a diverse medical and healthcare company (SIC 86900 Other Human Activities), as such we are unable to choose any specific sector tools. All methodology was collected centrally and based on absolute emissions.

Table One: The energy usage and equivalent carbon dioxide amounts (table) showing mandatory Scope 1 and 2 emissions and performance/intensity ratios.

UK/Off-Shore Energy and Emissions	Current Reporting Year 2020	Unit	Base Year (2019)	Emissions Percentage change
Energy from gas combustion (Scope 1)	2233899	kWh Gross	2065965	-
Emissions from gas combustion (Scope 1)	411	tCO <sub>2</sub> e	380	+8%
Energy from transport (Scope 1)	2320147	kWh	4843101	-
Emissions from transport (Scope 1)	587	tCO <sub>2</sub> e	1262	-54%
Total Scope 1 energy from activities for which the company own or control including combustion of fuel and operation of facilities	4554046	kWh	6909066	-
Total Scope 1 emissions from activities for which the company own or control including combustion of fuel and operation of facilities	998	tCO <sub>2</sub> e	1642	-39%
Total Scope 2 energy from purchase of electricity, heat, steam and cooling purchased for own use	2812853	kWh Gross	2600888	-
Total Scope 2 emissions from purchase of electricity, heat, steam and cooling purchased for own use	656	tCO <sub>2</sub> e	668	-2%
Total Scope 1 and 2 energy consumption used to calculate above emissions	7366899	kWh	9509952	-
Total Scope 1 and 2 emissions from energy consumption used to calculate above emissions	1653	tCO <sub>2</sub> e	2310	-28%
Turnover/Revenue	176	£million	164	-
Total number of staff based at the sites (full time equivalents)	601	people	566	-
Intensity ratio one: tCO <sub>2</sub> e (total gross Scope 1 + 2 carbon dioxide emissions) over total sales figures (turnover) millions	9	-	14	-
Intensity ratio two: vehicle carbon dioxide emissions tCO <sub>2</sub> e (Scope 1) – over sales figures (turnover) millions	3	-	8	-

Table Two: 2020 Intensity Ratios

	2020 Intensity Ratios	2020	2019 (Base)
Intensity ratio one:	Total Scope 1 and 2 carbon dioxide emissions from energy consumption – tCO <sub>2</sub> e over turnover millions	9	14
Intensity ratio two:	Vehicle carbon dioxide emissions tCO <sub>2</sub> e (Scope 1) – over sales figures (turnover) millions	3	8

### Brief comments on the above figures

On inspection of table one, Scope 1 transport related emissions fell by over 50% between 2019 and 2020. This is largely due to the COVID-19 pandemic, which restricted travel and access to customers. This result highlights the potential of maintaining reduced levels of travel emissions as the pandemic restrictions ease. In support of this is B. Braun's commitment to digitalising its work force and providing training, diagnostics, conferences and exhibitions online. In terms of intensity ratios, both decreased compared to 2019. This is a positive but also expected outcome (when considering the COVID-19 pandemic).

### Looking forward

B. Braun Medical Ltd has committed to reducing its Scope 1 & 2 emissions by 40% by the end of 2035, supporting NHS England on its path to achieving Net Zero by 2045.

### Our Roadmap for Carbon Reduction Activities

In support of our commitment to reductions in Scope 1 and 2 emissions, B. Braun Medical Ltd will also commit to the following;

- Buy 100% renewable (green) electricity (within 2021)
- Look to move our car fleet from diesel, petrol, hybrid to 100% EV within our 15 year target
- Investigate plant upgrades to reduce our gas usage/improve efficiencies (in 2021/22)
- Look to update/upgrade meters to AMR where they are giving estimated readings (in 2021)
- Create an Energy Policy, which will disclose our target reduction but also suggest ways B. Braun can reduce its energy consumption and CO<sub>2</sub> emissions, stating on-going actions (in 2021)
- Investigate increased use of self-renewable (own) generation of electricity such as installing more solar panels, thereby reducing our Scope 2 emissions (in 2022)
- Swap more fluorescent lighting for LED (ongoing)

### Our Completed Carbon Reduction Activities as of August 2021

- As of July 2021, we are buying 97% of our electric on a renewable tariff. This tariff is REGO certificated. This 97% constitutes 100% of the electricity which we directly finance effectively 'Net Zeroing' our Scope 2 energy purchases
- Created and published an Energy Policy for B. Braun Medical Ltd, available at [www.bbraun.co.uk](http://www.bbraun.co.uk), which discloses our target and commitment to reduce our emissions and is signed by our directors
- Created local and a global Sustainability Steering Committees (SSC), who will look at ways to better our sustainability efforts, projects and plans and bring these and advice to the boards
- Set-up UK sustainability project groups working beneath the local SSC, who are looking at specific projects/plans such as Scope Three data collection and ways to lower our Scope 1 & 2 emissions

### Review – Monitoring and Measurement

B. Braun Medical Ltd will review its energy policy, commitments, targets, plans and projects annually through the local SSC, and where our policy, targets and plans need to change, these will be done so via board approval/knowledge.

### Responsible Persons for Targets

Mr David Oates – Group Managing Director. Managing Director. Sales & Marketing

Mr Paul Skelton – Managing Director, Finance, IT & Operations

The (local) Sustainability Steering Committee (SSC)