

# Introcan Safety® Deep Access

## Instructions for Use

Introcan Safety Deep Access is an extended length Peripheral IV Catheter intended to be sited under ultrasound. It is indicated for use up to 30 days but in accordance with local policy guidelines, should be removed when clinically indicated. Introcan Safety Deep Access is suitable for use with pressure injectors up to 300psi.

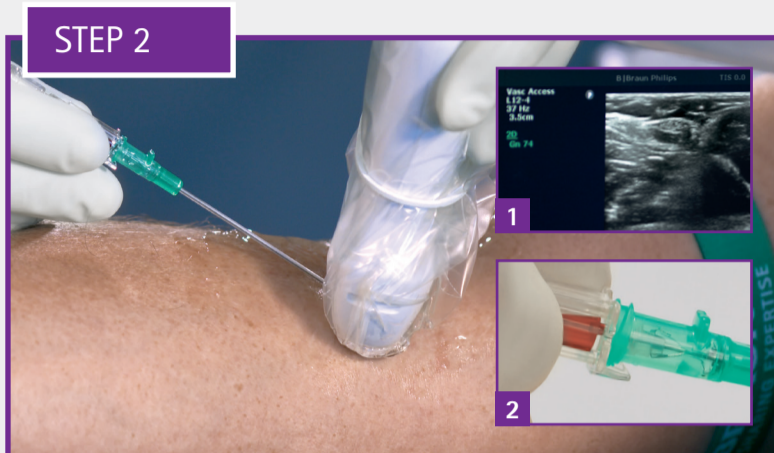


### PREPARATION & PRE-SCAN

- Gain consent from patient
- Align the ultrasound display
- Apply gel to probe
- Identify appropriate insertion site

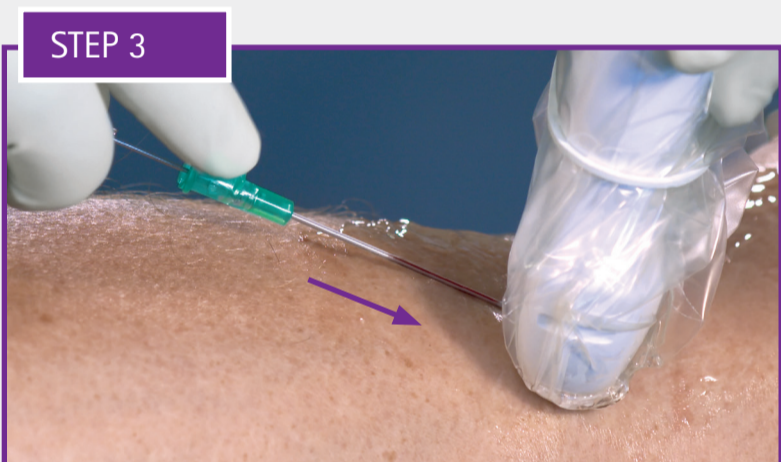
### PRE-INSERTION

- Gather and prepare equipment
- Disinfect the insertion site in accordance with local policy guidelines
- Cover probe and apply sterile gel



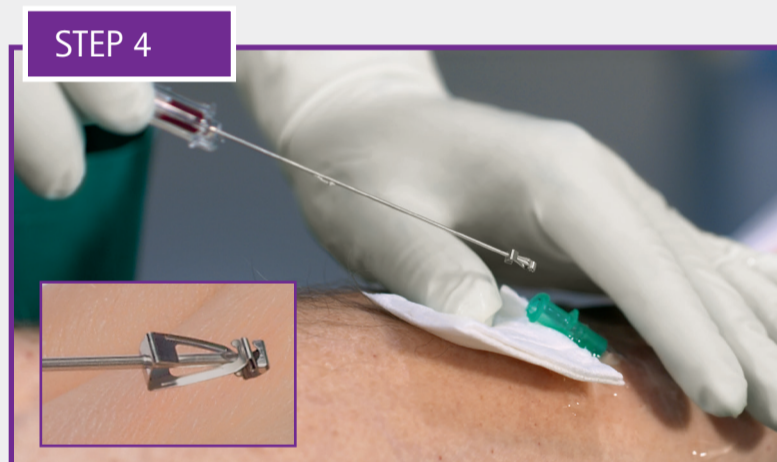
### INSERT & OBSERVE

- Select angle of insertion to access the vessel
- Use ultrasound image to confirm that the needle tip is in the centre of the vein **1**
- Observe first flashback of blood in the flashback chamber **2**
- Continue to use the ultrasound image to advance the needle tip down the centre of the vein



### ADVANCE CATHETER

- Use the push-off plate to advance the catheter off the needle
- Observe second flashback of blood (catheter flash) between the needle and the catheter to confirm catheter is in the vessel
- Continue advancing the catheter off the needle into the vessel



### OCCLUDE & REMOVE NEEDLE

- Place down the ultrasound probe and free your hand to occlude the vein at the tip of the catheter
- Remove the stylet in a slow controlled manner, keeping it in line with the catheter
- Upon removal of the stylet the safety shield will automatically activate helping prevent the risk of needlestick injury
- The stylet should be disposed of in a sharps container immediately



### CATHETER STABILISATION

- Attach the pre-primed needlefree extension
- Stabilise the catheter and apply a sterile dressing in accordance with your local policy guidelines
- Using a push/pause technique, flush the catheter via the needlefree extension
- Once flushed, detach the syringe and apply the clamp in accordance with the manufacturer's guidelines for the needlefree used in your facility

Please scan the QR code to view the Introcan Safety® Deep Access clinical demonstration video



For further information please contact your local B. Braun Sales Representative or Clinical Education Specialist.